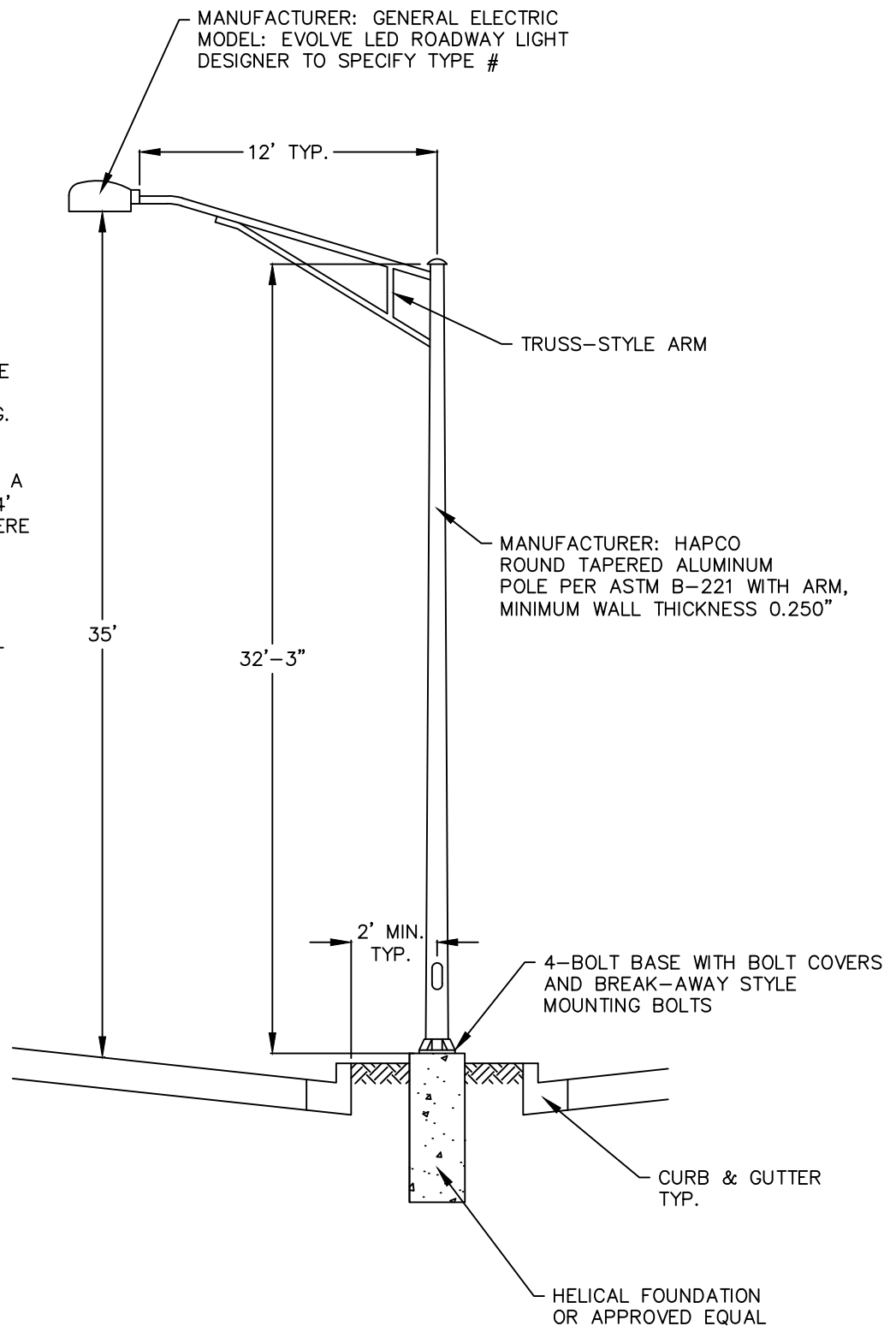


NOTES:

1. VERIFY FIXTURE AND POLE SPECIFICATIONS WITH THE VILLAGE PRIOR TO ORDERING.

2. SETBACK SHALL BE 2' FROM EDGE OF ROADWAY IF A CURB, SETBACK SHALL BE 4' FROM EDGE OF ROAD IF THERE IS NO CURB.

3. AT ROADWAY INTERSECTIONS WITH SIGNS, LIGHT POLES SHALL BE SET BACK AS TO NOT OBSTRUCT STOP SIGNS, ETC.



## STREET LIGHT POLE DETAIL