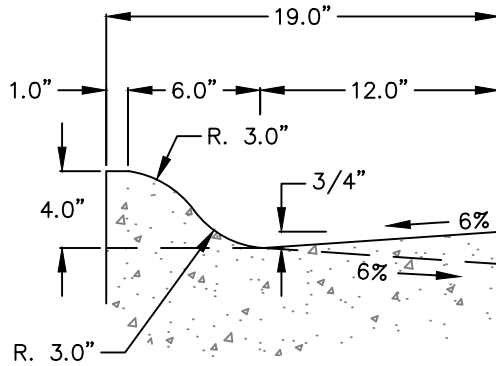
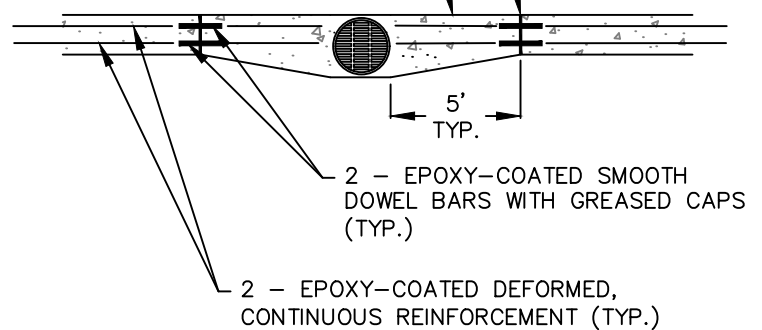


TYPE M-4.12

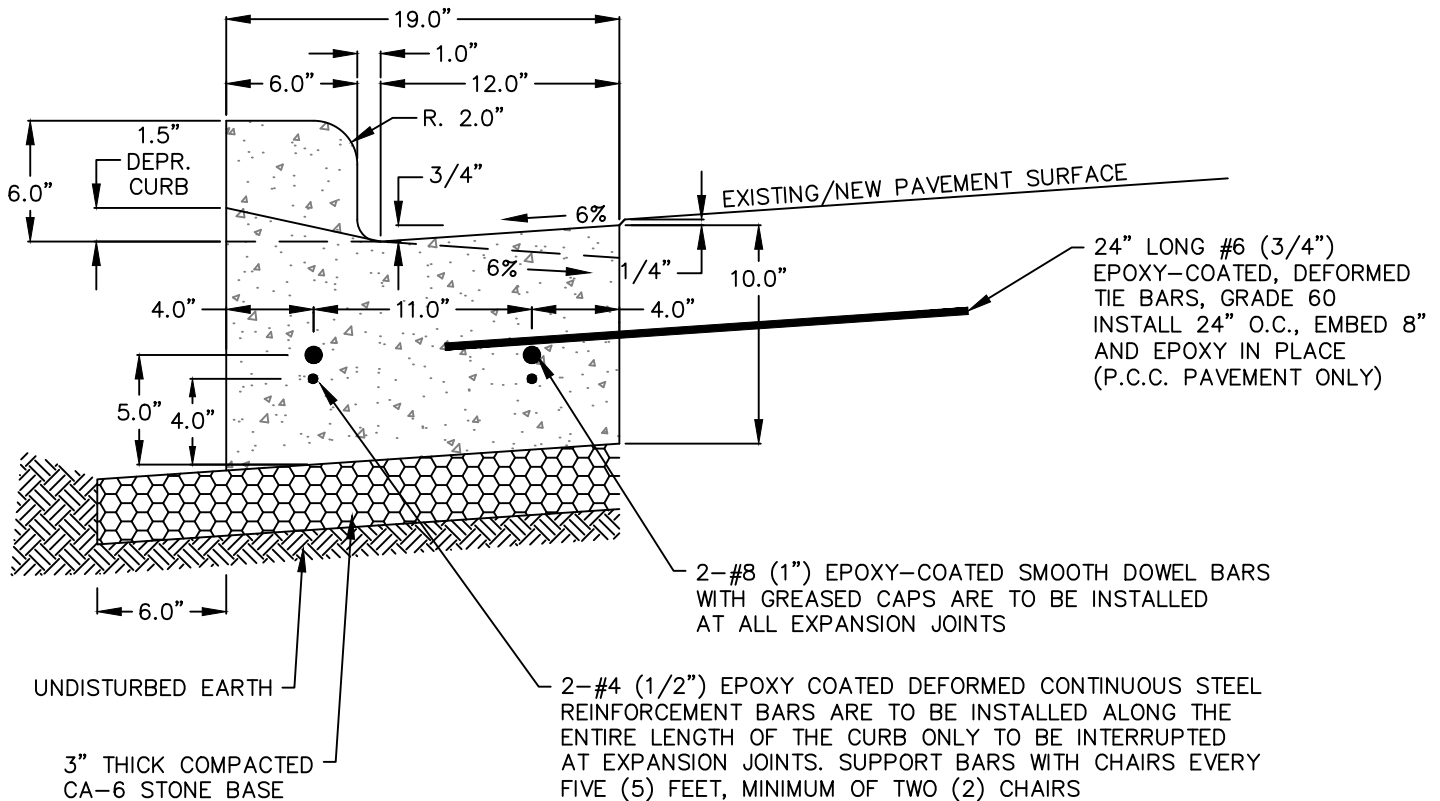


FOR FRAMES WITH A WIDTH ABOVE 19.0",
TAPER GUTTER FLAG OVER A 5-FOOT
TRANSITION TO FULL FRAME WIDTH (TYP.)



PLAN VIEW

TYPE B-6.12 & DEPRESSED CURB



NOTES:

1. EXPANSION JOINTS ARE TO BE CONSTRUCTED AT 60' INTERVALS AND AT ADDITIONAL LOCATIONS AS SPECIFIED BY THE ENGINEER.
2. CONTRACTION JOINTS ARE TO BE CONSTRUCTED AT 15' INTERVALS AND AT ADDITIONAL LOCATIONS AS SPECIFIED BY THE ENGINEER
3. WITH NEW CURB REPLACEMENT NEXT TO HMA, CONTRACTOR IS REQUIRED TO PLACE 2' OF HMA FULL DEPTH PAID SEPARATELY TO MATCH EXISTING
4. REVERSE PITCH CURB WILL REQUIRE A 6% GUTTER FLAG DROPPING AWAY FROM CURB

COMBINATION CURB & GUTTER